



# Nailnews

Autumn Winter 2011/12 | Bio Sculpture Newsletter | Healthier Nail Care

FOLLOW US ON FACEBOOK!  
www.facebook.com/BioSculptureME

FOLLOW US ON TWITTER...  
BioSculptureme  
FOR NEWS & UPDATES

## AUTUMN WINTER COLOUR REPORT 2011/12



## The Vintage Africa Collection

Vintage Africa is a Collection of Unique African inspired colours creating memories of destinations of Africa's most iconic locations. Autumn/Winter has a strong androgynous influence with grungy elegance. Luxurious yet practical dark muddy colours, khaki, olive green, beige, camel and nude dominated the catwalks. Dramatic nail colour is the key to complete this winter's trends.

**# 123 Namib Desert**  
this is a platinum brown with warm undertones

**# 124 Okavango Delta**  
this khaki shade is a key part of the season's military trends

**# 125 Congo Caves**  
black has been replaced with grey, need we say more!

**# 126 Savannah Dusk**  
dusky pink neutralises the dark colours which dominate, to create a lighter mood.

**# 127 Victoria Falls**  
dark navy blue features strongly this season, reflecting a classic, severe and rigorous style.



123 Namib Desert 124 Okavango Delta 125 Congo Caves 126 Savannah Dusk 127 Victoria Falls



## Vintage Africa NAIL COLLECTION

**20** Cherry Ripe

**4** Rustic Terracotta

**98** Soaring Dove

**2012** Midnight Blue

**80** Starry Night

**67** French Crème

**111** Chocolate Fudge

**2062** Dawn

**GREYS, BLUES & BLACKS**  
**93** Golden Silver  
**98** Soaring Dove  
**115** Eclipse  
**2035** Cast Iron  
**2012** Midnight Blue  
**2066** Denim  
**2017** Licorice  
**80** Starry Night

**RUSTS & WARM REDS**  
**62** Holly Berry  
**76** Clay Oxide  
**5** Dusty Rose  
**4** Rustic Terracotta  
**21** Ravishing Ruby  
**20** Cherry Ripe  
**74** Real Red  
**94** Royal Red  
**22** Ravishing Red  
**63** Moulin Rouge  
**117** Breaking Dawn

**NUDES AND NATURALS**  
**77** Coco Frost  
**2062** Dawn  
**2003** Nude  
**67** Crème  
**2011** Amber Champagne  
**70** Frappachino  
**111** Chocolate Fudge  
**23** Café Latte  
**9** Toffee  
**69** Summer of 69  
**2060** Fullers Earth  
**15** Wild Berry  
**2052** Ivory Satin

**COLOUR COMBO'S**

For those wanting to be creative, try combining two colours, one on top of the other and you will be amazed at how many beautiful new colours you can create. Here are some ideas to inspire you:

- 2035 with 102 on top** – beautiful bright purple
- 2035 with 2001 on top** – graphite grey pearl finish
- 61 with 2012 on top** – deep dark purple
- 111 with 2062 on top** – lilacy grey
- 98 with 93 on top** – super silver
- 111 with 2059 on top** – taupe with a golden sprinkling
- 2035 with 2043 on top** – charcoal with a silver sprinkling

**BIO SCULPTURE INTRODUCES... SSSSSSSNAKE SKIN NAILS**

Shoes, bags, belts, and even clothing items have been made using the skin of snakes. But who would have thought we'd ever be wearing it on our nails? Not for the faint-hearted. You too can offer snake skin manicures and pedicures.

As demonstrated by Bio Sculpture USA on The Today Show, snakeskin nails are fast becoming the rage in New York where people are paying up to \$300 for a set of real snake skin nails.

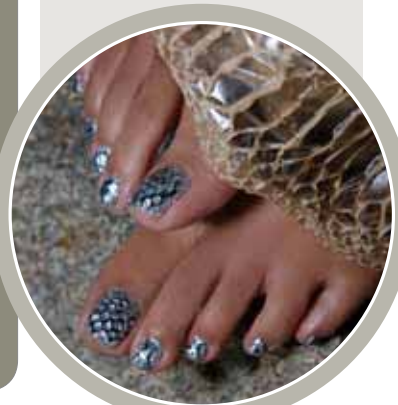
It's important to note that Bio Sculpture use shed snake skin. Snake's shed their skin regularly and it's from this shed skin that this nail art is created.

The versatility of Bio Sculpture Gel allows the nail artists to embed the snake skin into the gel and protect it by sealing it with a flexible finishing layer of Bio Sculpture Gel.

*For those who do not want to work with snake skin, you can use Mimic Mesh to create a similar effect, which will be available soon.*

*Sanitised snake skin is available for sale at Dhs 170. (comes with instructions)*

*Recommended Treatment price Dhs 900 - 990.*



**Vintage Africa Nail Art**



**AFRICAN LEOPARD**

- Base one layer #122 (Ashes of Roses), cured
- #2059 (Vintage Topaz) applied in the centre of the nail, cure
- Blotches with #123 (Namib Desert), cure
- Outline with #2017 (Liquorice), cure
- Add definition with gold paint, when dry end as usual.



**CAMO-CLASSIC**

- Using #122 (Ashes of Roses), #100 (Pistachio Green), and #123 (Namib Desert) fade these gels from the four corners towards the middle until a 'base' colour is created, cure
- On the cured gel, make rough lines with #123 (Namib Desert), #124 (Okavango Delta) and #111 (Chocolate Fudge), cure
- Make lines on top with #115 (Eclipse), #100 (Pistachio Green) and #122 (Ashes of Roses), cure and end as usual.



**BLACK TIGER**

- Base layer #125 (Congo Caves), cure
- Fade #1 French White in a line down the middle, cure
- Fade #2017 (Liquorice) from one nail sidewall line to the center, cure
- Fade #2017 (Liquorice) from the other nail sidewall line to the center, cure
- Add definition with white & black paint. Alternatively use #1 (French White) or #2017 (Liquorice), end as usual.



**VINTAGE LACE**

- Apply two layer of #126 Savannah Dusk curing between layers
- Apply a medium layer #125 Congo Caves done the one side of the nail to create a colour on colour effect (dual colour), cure.
- Use #1 French white to create a lace like pattern where the two colours meet. (Spot cure between brush strokes), end as usual.

# New & Improved...



- 1. Cuticle Oil Refill, 50ml  
Code 1228/50 - 75 Dhs
- 2. Vitamin Dose Refill, 50ml  
Code 1040 - 150 Dhs
- 3. Anti Fungal Pre-treatment, 50ml  
Code 1203/50 - 16 Dhs
- 4. Polish Remover 50ml, Code 815 - 10 Dhs  
1litre, Code 816 - 90 Dhs
- 5. Hot Gloves  
Code 909 - 130 Dhs
- 6. Tootseez  
Code 912 - 1 Dh
- 7. Hot Socks  
Code 910 - 130 Dhs
- 8. Dual Cleanser, 50ml  
Code 300/50 - 16 Dhs
- 9. Gel Remover, 50ml  
Code 807/50 - 12 Dhs

**NEW IN A-RANGE**

- 10. Pretty in Mink (#2097)  
Soft pink with a sliver tint and tiny sparkles, Code 2097/4 - 80 Dhs
- 11. Crystal Burst (#2098)  
Translucent sparkles and small gold glitters, Code 2098/4 - 80 Dhs

## NEW PRODUCTS COMING SOON...

Bio Sculpture® Pedi Paddle Handle is used as a sanitary handle for Disposable Replacements Patches. Double-sided with 160 Grit Patch & 180 Grit patch. Bio Sculpture® Pedi Paddle Disposable Replacement patches comes in a pack of 20 to use with the Pedi-Paddle Handle. Comes with ten 160 Grit patches and ten 180 Grit patches. Use to buff dry skin during a pedicure before applying Heel Balm, Mint Mask, and Hand and Body Butter.



**Pedi-Paddle Handle - 160/180 Grit**



**Pedi-Paddle Replacement Patches 6.5" (20) - 160 & 180 Grit**

## From A-range to E-range... Now available in nail polish.

Ivory Beige (#2093) Honey Beige (#2094)  
Nude Beige (#2095) Salmon Beige (#2096) ▾



2093      2094      2095      2096

## HOW TO... MAINTAIN YOUR UV LAMP

- Place square piece of foil in the base of your lamp to protect it from Gel.
- Clean the outside of the lamp with Sanitiser – never use Gel Remover, as it will remove the lovely shine.
- Replace UV Bulbs regularly to ensure efficient and proper curing.



**TIP :** Change your light bulbs every 500 hours of use, old bulbs don't go out, they just get weaker. Place a sticker noting date bulbs are changed under UV unit.



## TRAINING COURSES

Advance your skills to save time and money, learn how to be more efficient, use less product and increase profits. Contact your Distributor to reserve a place for either yourself or your team.

### BASIC COURSE

Spa Manicure / Pedicure  
Everlasting Manicure / Pedicure  
Colour & French Overlay

### ADVANCE COURSE

Advance your skills to save time and money, learn how to be more efficient, use less product and increase profits.

### NAIL ART COURSE

### PRODUCT KNOWLEDGE TRAINING

Train your reception and the spa managers team - a session on Bio Sculpture Gel product and treatment knowledge and increase your overall sales and revenue.

### CONTACT US :

Bio Sculpture Middle East  
Office & Training Centre,  
504, Zarouni Business Centre  
Al Barsha 1, Sheikh Zayed Road,  
P.O.Box : 74706  
Dubai, U.A.E

Tel +971 4 3414820  
Mob +971 50 527 2397  
Fax +971 4 3232269  
info@bio-sculpture.ae



## HOW TO...



## RECOGNISE DIFFERENT NAIL CONDITIONS AND THEIR CAUSES

You will come across many different situations where clients will ask your guidance and advice on how to improve their nail condition and growth. It is important to only provide advice and not to diagnose and if you are ever unsure always refer to their GP.

Nails help to provide an accurate record of our health, so can signal internal problems before other symptoms appear. Nails tend to lose moisture as we age, leaving them thinner and more brittle. Extreme dieting and vitamin deficiencies can damage nail health. In a situation like this natural vitamin supplements can be used to help improve these conditions. People affected with psoriasis, arthritis and eczema often experience problems with their nails, like thickening, yellowing, crumbling and skin around the nail can become inflamed. Nail separation can also happen known as onycholysis. Here is a table with some basic nail disorders that you may come across and what they may be signaling:

APPEARANCE	POSSIBLE CAUSES
Clubbin-nail bulge and curve downward and blue nail bed	Heart and lung disease
Nail tips turn up at the end	Anemia or B12 deficiency
Vertical ridges	Hormone imbalance or protein deficiency
Horizontal ridges	Physical or psychological stress
Black vertical lines or spots	Intestinal ulcer or melanoma
Thick nails	Circulatory problems
Red skin around cuticles	Psoriasis
Yellowish nails with pink base	Diabetes

As a nail technician it is important to keep your knowledge up to date and always read and research. You can never know everything so keep an open mind and always be ready to learn from others around you.



## NEWS & INFORMATION

## Be Aware of Counterfeit Products & Claims

We would like to advise all our clients to be aware of products that are entering the market making claims to be similar and in some instances to be the same as Bio Sculpture even to the extent of mimicking our pots and logos. Don't let them confuse you!

Please ensure that you are acquiring your products from a Bio Sculpture Authorised Distributor, this will ensure the customer support you are entitled to.

Bio Sculpture Gel pots are printed with our logo, name, ingredient listing, batch number and ME contact details which are cosmetic product regulations.

### Facts

- There is only one Bio Sculpture Gel. Bio Sculpture Gel is not sold in any beauty supply shops.
- The only way to purchase Bio Sculpture Gel is through one of our distributor.
- Bio Sculpture does not make any other Gels in our factory.
- Bio Sculpture does not do private labelling.
- If it cannot be soaked off with Bio Sculpture Gel Remover, it is NOT Bio Sculpture Gel.
- Our Gels never need to be mixed with acrylic powder.
- If it is sold for a fraction of the cost of Bio Sculpture Gel, it is not Bio Sculpture Gel.
- If a product claims to be 100% natural or to contain "seaweed", ask to see the product listing (Safety Data Sheets) or an official document from the manufacturer as a proof that the product is "organic", "natural" or "seaweed".

### How to Distinguish Our Jars

- All of our Gels come in black jars with gold writing, never white.
- All of our Gels have our signature gold diamond logo.
- On the back of the jar it will read "Made in South Africa", never any other country.

